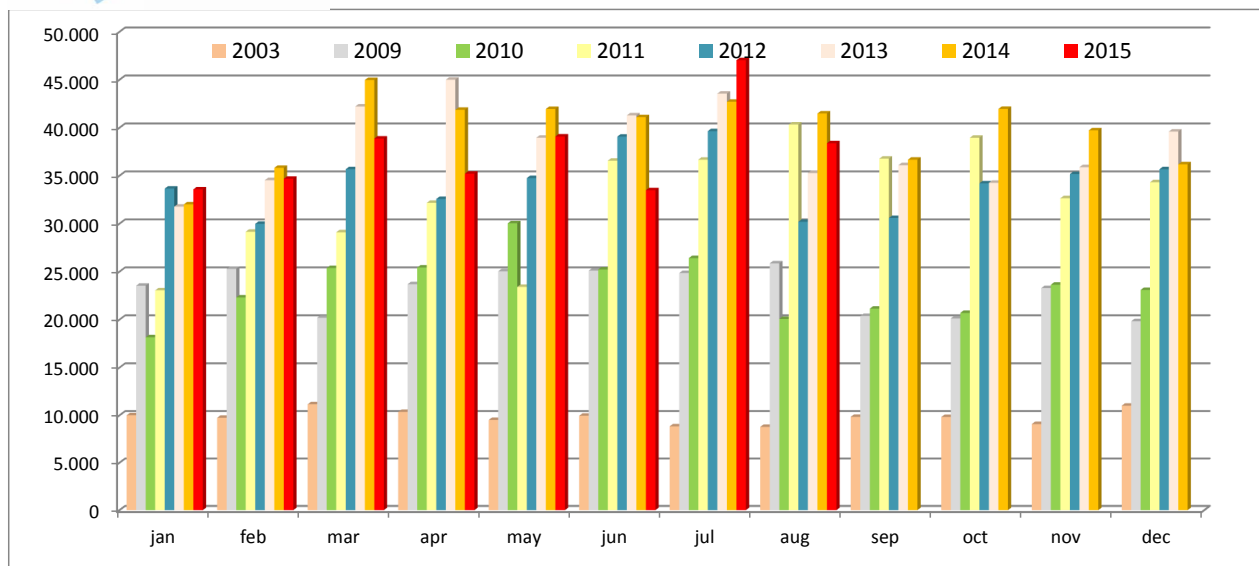


## STATISTICS: MONTHLY TREND 2003 - 2015 IN TEU



### TOTAL VOLUMES

2015  
UP TO AUGUST  
300.356

2014  
UP TO AUGUST  
321.945

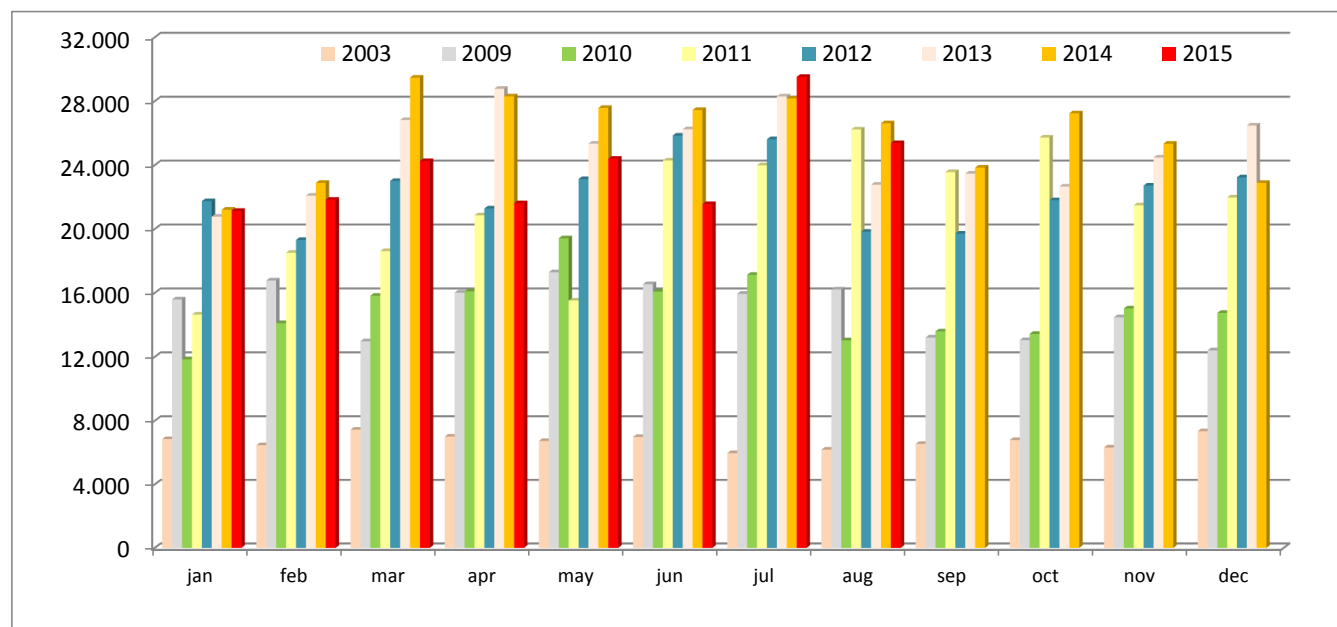
2013  
UP TO AUGUST  
312.640

2012  
UP TO AUGUST  
275.592

2011  
UP TO AUGUST  
250.475

TEUS	jan	feb	mar	apr	may	jun	jul	aug	sep	oct	nov	dec	UP TO AUGUST
2003	10.011	9.744	11.166	10.359	9.511	9.958	8.840	8.783	9.842	9.825	9.082	11.021	78.372
2009	23.536	25.294	20.199	23.697	25.043	25.113	24.861	25.868	20.379	20.127	23.292	19.836	193.611
2010	18.161	22.315	25.380	25.434	30.041	25.228	26.416	20.071	21.149	20.699	23.641	23.094	193.046
2011	23.053	29.163	29.106	32.173	23.410	36.563	36.669	40.338	36.782	38.959	32.657	34.322	250.475
2012	33.662	29.988	35.681	32.580	34.755	39.076	39.651	30.199	30.596	34.206	35.175	35.678	275.592
2013	31.780	34.539	42.217	45.007	38.962	41.295	43.560	35.280	36.098	34.263	35.894	39.602	312.640
2014	32.016	35.820	44.974	41.871	41.956	41.104	42.715	41.489	36.674	41.965	39.731	36.192	321.945
2015	33.576	34.683	38.874	35.211	39.091	33.491	47.044	38.386					300.356
2009 vs 2003	135,10	159,59	80,90	128,76	163,31	152,19	181,23	194,52	107,06	104,85	156,46	79,98	147,04
2010 vs 2009	-22,84	-11,78	25,65	7,33	19,96	0,46	6,25	-22,41	3,78	2,84	1,50	16,42	-0,29
2011 vs 2010	26,94	30,69	14,68	26,50	-22,07	44,93	38,81	100,98	73,92	88,22	38,14	48,62	29,75
2012 vs 2011	46,02	2,83	22,59	1,27	48,46	6,87	8,13	-25,14	-16,82	-12,20	7,71	3,95	10,03
2013 vs 2012	-5,59	15,18	18,32	38,14	12,10	5,68	9,86	16,83	17,98	0,17	2,04	11,00	13,44
2014 vs 2013	0,74	3,71	6,53	-6,97	7,68	-0,46	-1,94	17,60	1,60	22,48	10,69	-8,61	2,98
2015 vs 2014	4,87	-3,18	-13,56	-15,91	-6,83	-18,52	10,13	-7,48					-6,71

## STATISTICS: MONTHLY TREND 2003 - 2015 IN CNTR



TOTAL VOLUMES
2015 UP TO AUGUST 189.708
2014 UP TO AUGUST 211.693
2013 UP TO AUGUST 201.117
2012 UP TO AUGUST 179.786
2011 UP TO AUGUST 162.657

CNTR	jan	feb	mar	apr	may	jun	jul	aug	sep	oct	nov	dec	UP TO AUGUST
2003	6.847	6.465	7.440	7.008	6.731	6.984	5.964	6.186	6.546	6.789	6.319	7.344	53.625
2009	15.597	16.779	12.975	16.021	17.294	16.550	15.944	16.218	13.213	13.045	14.478	12.409	127.378
2010	11.851	14.112	15.825	16.104	19.420	16.087	17.135	13.037	13.591	13.437	15.028	14.752	123.571
2011	14.643	18.517	18.619	20.854	15.524	24.283	23.988	26.229	23.565	25.725	21.484	21.973	162.657
2012	21.744	19.317	23.011	21.288	23.125	25.849	25.621	19.831	19.710	21.805	22.722	23.236	179.786
2013	20.774	22.087	26.824	28.776	25.343	26.244	28.298	22.771	23.465	22.658	24.471	26.477	201.117
2014	21.210	22.889	29.474	28.303	27.580	27.449	28.168	26.620	23.844	27.241	25.340	22.888	211.693
2015	21.138	21.834	24.253	21.619	24.402	21.561	29.523	25.377					189.708
2009 vs 2003	127,79	159,54	74,40	128,61	156,93	136,97	167,34	162,17	101,85	92,15	129,12	68,97	137,53
2010 vs 2009	-24,02	-15,89	21,97	0,52	12,29	-2,80	7,47	-19,61	2,86	3,00	3,80	18,88	-2,99
2011 vs 2010	23,56	31,21	17,66	29,50	-20,06	50,95	39,99	101,19	73,39	91,45	42,96	48,95	31,63
2012 vs 2011	48,49	4,32	23,59	2,08	48,96	6,45	6,81	-24,39	-16,36	-15,24	5,76	5,75	10,53
2013 vs 2012	-4,46	14,34	16,57	35,17	9,59	1,53	10,45	14,83	19,05	3,91	7,70	13,95	11,86
2014 vs 2013	2,10	3,63	9,88	-1,64	8,83	4,59	-0,46	16,90	1,62	20,23	3,55	-13,56	5,26
2015 vs 2014	-0,34	-4,61	-17,71	-23,62	-11,52	-21,45	4,81	-4,67					-10,39